



(L-R): Award recipient Landgate's David Dans and Mr Giles Nunis, Western Australian Government Acting Chief Information Officer.

AT A GLANCE

The following table compares current month data with the previous month and the same time previous year.

SERVICE/PRODUCT DESCRIPTION	COMPARISON		
	JUN 2015	MAY 2015	JUN 2014
Total Document Lodgements	34,852	30,239 ↗15.25%	36,423 ↘4.31%
Transfer Document Lodgements	8,413	6,940 ↗21.22%	9,851 ↘14.60%
Mortgage Lodgements	10,122	8,704 ↗16.29%	10,615 ↘4.64%
Searches	158,516	195,083 ↘18.74%	166,079 ↘4.55%
Electronic Advice of Sale Lodgements	6,491	6,565 ↘1.27%	7,149 ↘9.20%
Subdivisional Lots Created	1,284	2,658 ↘51.69%	904 ↗42.04%
Strata Lots Created	1,039	1,026 ↗1.27%	739 ↗40.60%
New Lots Created	2,323	3,684 ↘36.94%	1,643 ↗41.39%
Strata Plan and Survey Strata Plan Lodgements	224	217 ↗3.23%	188 ↗19.15%

Prestigious award for Landgate Chief Information Officer

Landgate's Chief Information Officer (CIO) David Dans received the prestigious 'CIO of the Year' award at the 24th Western Australian Information Technology and Telecommunications Alliance (WAITTA) INCITE Awards, held on Friday 19 June.

Mr Dans said, "This award is a great honour and recognises the whole Information Management team, the spirit of innovation at Landgate and reinforces the strategic path we are on."

"Landgate has great people and it shows that being prepared to do things differently, to challenge and learn, and most of all to stay focused on the customer, delivers results."

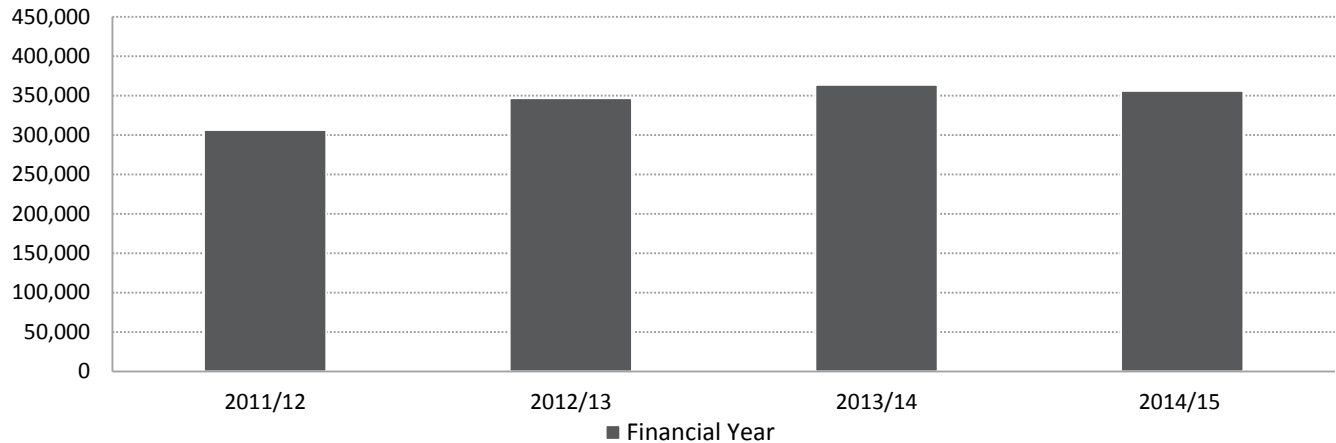
Landgate Chief Executive Mike Bradford said the award recognised Mr Dans' ability to drive change through technology and strong leadership.

"David's skills and expertise have played an integral role in how our agency is adapting and preparing itself for the future as we face an ever-changing digital landscape, and I join all of Landgate in congratulating him on his achievements over the past year," Mr Bradford said

Information about [WAITTA](#) and the [CIO of the Year](#) category is also available online.

TOTAL DOCUMENT LODGEMENTS, BY FINANCIAL YEAR

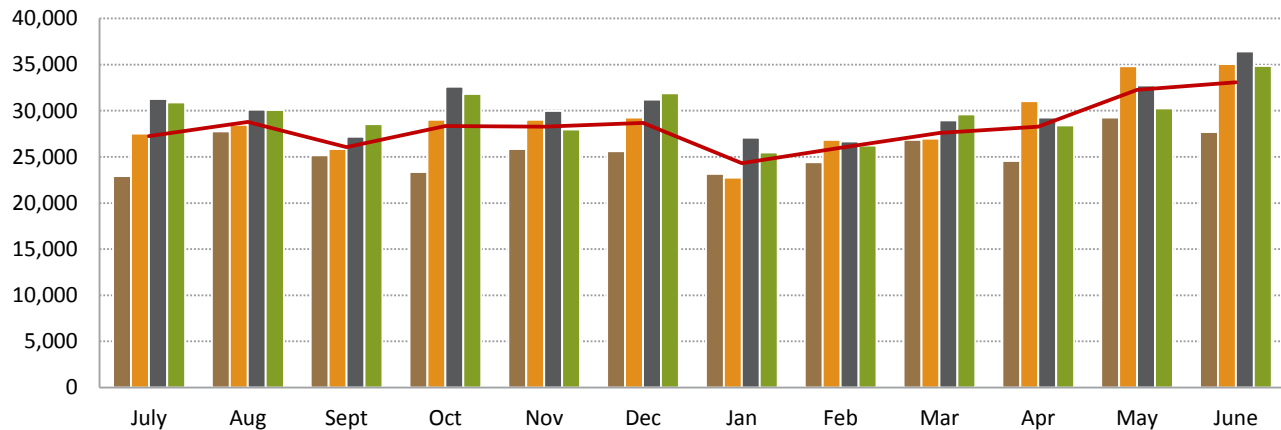
Total document lodgements 2014/15 (356,010) reflect a 2.05% decrease when compared to 2013/14 (363,477).



Financial Year	11/12	12/13	13/14	14/15 YTD
Total Lodgements July to June	306,558	346,610	363,477	356,010

TOTAL DOCUMENT LODGEMENTS, BY MONTH

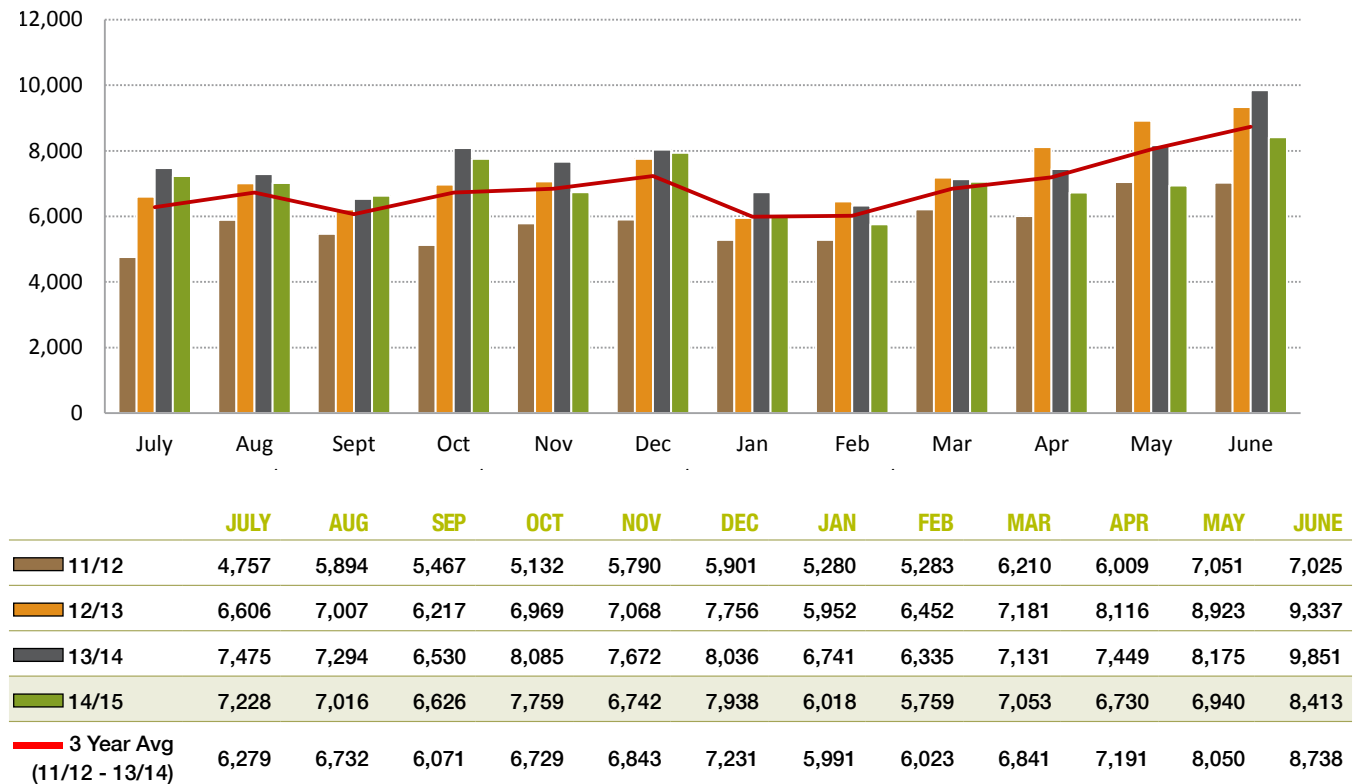
The number of documents lodged in June 2015 (34,852) increased 15.25% from the previous month (30,239) and decreased 4.31% from June 2014 (36,423).



	JULY	AUG	SEP	OCT	NOV	DEC	JAN	FEB	MAR	APR	MAY	JUNE
11/12	22,925	27,758	25,153	23,370	25,842	25,617	23,142	24,414	26,852	24,542	29,243	27,700
12/13	27,515	28,481	25,847	29,007	29,006	29,264	22,732	26,834	26,984	31,041	34,828	35,071
13/14	31,263	30,118	27,174	32,606	29,965	31,201	27,093	26,669	28,956	29,261	32,748	36,423
14/15	30,898	30,068	28,560	31,816	27,949	31,898	25,483	26,213	29,617	28,417	30,239	34,852
3 Year Avg (11/12 - 13/14)	27,234	28,786	26,058	28,328	28,271	28,694	24,322	25,972	27,597	28,281	32,273	33,065

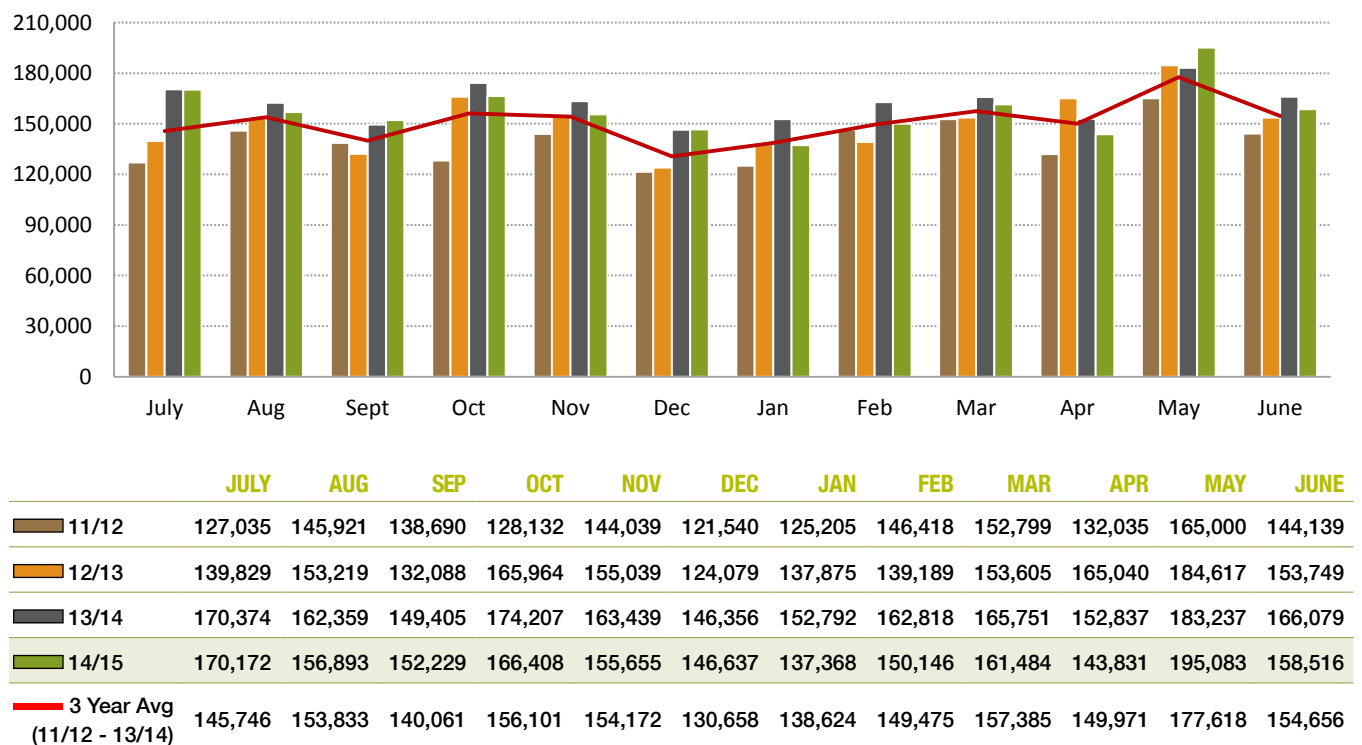
TRANSFER LODGEMENTS, BY MONTH

Transfer documents lodged in June 2015 (8,413) increased 21.22% from the previous month (6,940) and decreased 14.60% from June 2014 (9,851). The number of mortgages lodged during June 2015 (10,122) increased 16.29% from the previous month (8,704) and decreased 4.64% from June 2014 (10,615).



SEARCH ACTIVITIES, BY MONTH

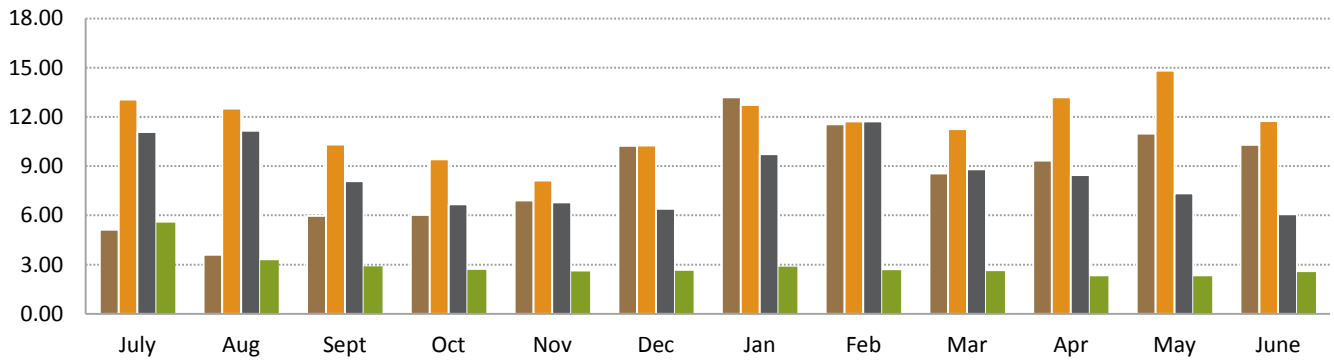
The number of searches for June 2015 (158,516) decreased 18.74% from the previous month (195,083) and decreased 4.55% from June 2014 (166,079).



TIME TO REGISTER A TRANSACTION AGAINST A CERTIFICATE OF TITLE, BY MONTH

Target: 75% of documents within 5.2 days

During June 2015 the average number of days to register a transaction against a Certificate of Title was 2.55 days, a marginal increase compared to the previous month (2.29 days).

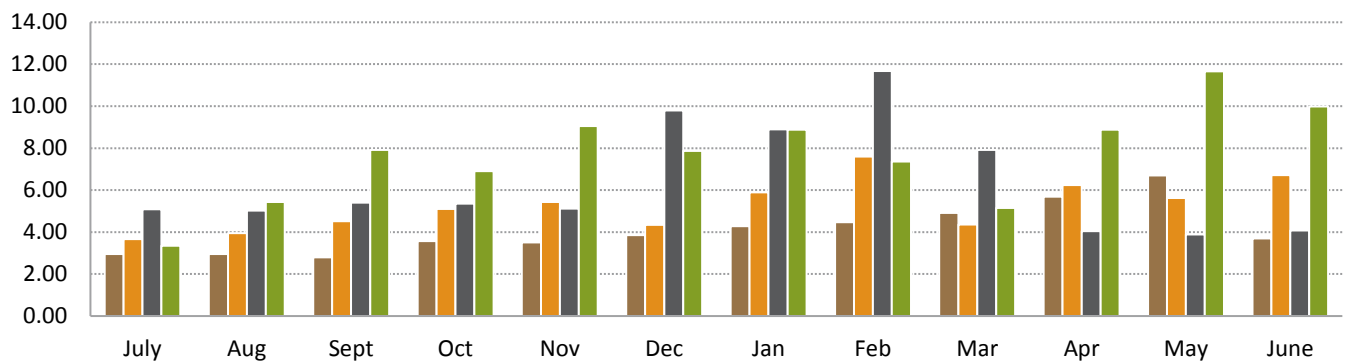


	JULY	AUG	SEP	OCT	NOV	DEC	JAN	FEB	MAR	APR	MAY	JUNE
11/12	5.13	3.60	5.96	6.03	6.91	10.23	13.19	11.55	8.56	9.34	10.99	10.30
12/13	13.05	12.50	10.31	9.42	8.13	10.26	12.72	11.72	11.25	13.20	14.82	11.74
13/14	11.08	11.16	8.08	6.68	6.79	6.41	9.73	11.73	8.80	8.45	7.35	6.07
14/15	5.56	3.26	2.90	2.68	2.59	2.62	2.88	2.66	2.61	2.28	2.29	2.55

TIME TO REGISTER A CERTIFICATE OF TITLE FOR A LARGE SUBDIVISION, BY MONTH

Target: 5 days

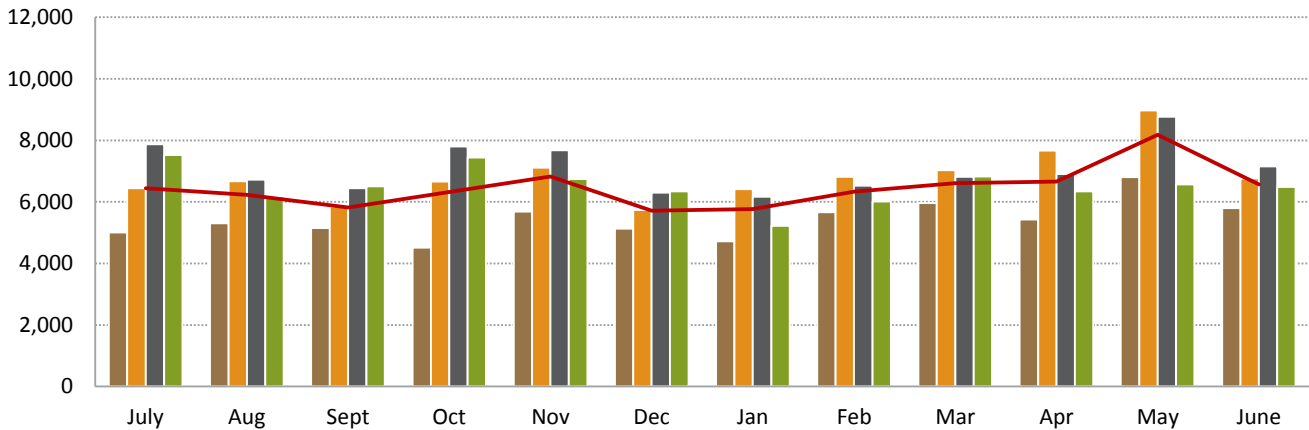
During June 2015 the average number of days to register a Certificate of Title over large subdivisions was 9.98 days, a decrease compared to the previous month (11.66 days).



	JULY	AUG	SEP	OCT	NOV	DEC	JAN	FEB	MAR	APR	MAY	JUNE
11/12	2.96	2.96	2.80	3.57	3.51	3.86	4.28	4.47	4.92	5.68	6.69	3.70
12/13	3.66	3.95	4.52	5.10	5.44	4.35	5.89	7.60	4.36	6.24	5.63	6.72
13/14	5.08	5.03	5.40	5.35	5.12	9.79	8.90	11.68	7.91	4.04	3.89	4.07
14/15	3.35	5.43	7.91	6.91	9.05	7.86	8.87	7.36	5.15	8.87	11.66	9.98

ELECTRONIC ADVICE OF SALE (EAS) LODGEMENTS, BY MONTH

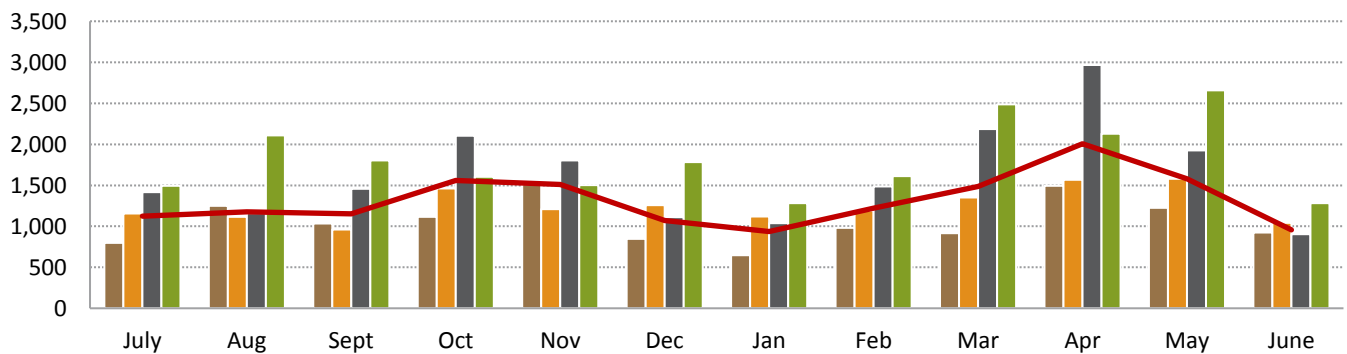
A total of 6,491 lodgements were registered during June 2015, a 1.27% decrease from the previous month (6,565) and a 9.20% decrease from June 2014 (7,149).



	JULY	AUG	SEP	OCT	NOV	DEC	JAN	FEB	MAR	APR	MAY	JUNE
11/12	5,004	5,307	5,147	4,515	5,689	5,126	4,717	5,660	5,966	5,425	6,801	5,799
12/13	6,446	6,675	5,853	6,657	7,109	5,731	6,418	6,818	7,030	7,663	8,975	6,763
13/14	7,877	6,720	6,448	7,797	7,678	6,296	6,165	6,522	6,817	6,905	8,767	7,149
14/15	7,524	6,184	6,507	7,443	6,743	6,345	5,220	6,015	6,821	6,345	6,565	6,491
3 Year Avg (11/12 - 13/14)	6,442	6,234	5,816	6,323	6,825	5,718	5,767	6,333	6,604	6,664	8,181	6,570

NUMBER OF SUBDIVISIONAL LOTS, BY MONTH

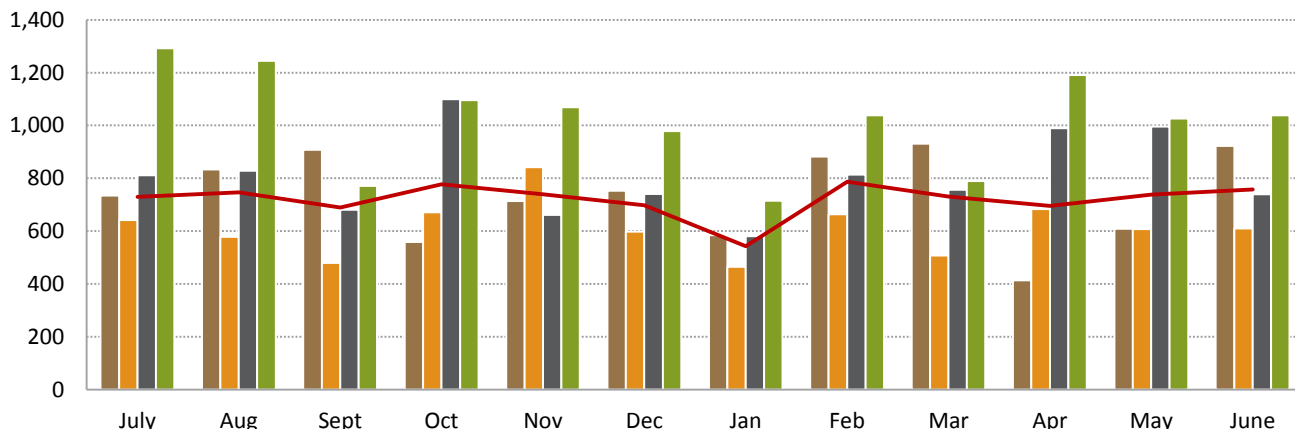
There were 150 Freehold Survey Deposited Plans lodged during June 2015 creating 1,284 sub-divisional lots, a 51.69% decrease from the previous month (2,658) and a 42.04% increase from June 2014 (904).



	JULY	AUG	SEP	OCT	NOV	DEC	JAN	FEB	MAR	APR	MAY	JUNE
11/12	797	1,250	1,036	1,115	1,514	847	647	982	915	1,492	1,225	924
12/13	1,158	1,115	963	1,460	1,210	1,259	1,121	1,195	1,352	1,567	1,581	1,041
13/14	1,418	1,162	1,459	2,104	1,803	1,110	1,037	1,487	2,186	2,965	1,927	904
14/15	1,493	2,106	1,803	1,602	1,503	1,781	1,281	1,612	2,487	2,128	2,658	1,284
3 Year Avg (11/12 - 13/14)	1,124	1,176	1,153	1,560	1,509	1,072	935	1,221	1,484	2,008	1,578	956

NUMBER OF STRATA TITLE LOTS, BY MONTH

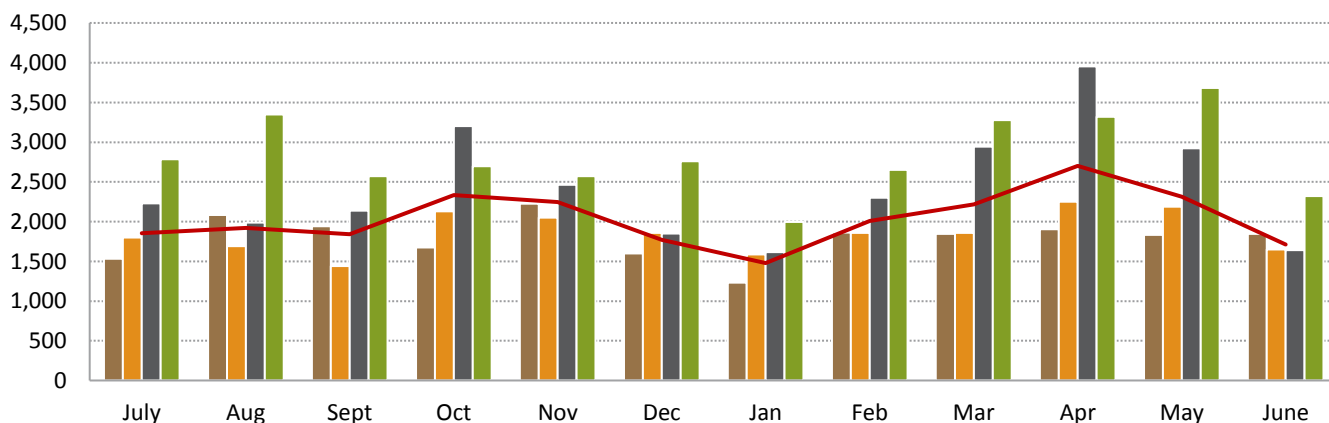
During June 2015, 224 strata plans were lodged creating 1,039 strata lots, a 1.27% increase from the previous month (1,026) and a 40.60% increase from June 2014 (739).



	JULY	AUG	SEP	OCT	NOV	DEC	JAN	FEB	MAR	APR	MAY	JUNE
11/12	734	834	908	559	714	753	584	882	931	414	609	923
12/13	642	578	479	671	842	598	465	664	507	683	608	610
13/14	812	828	681	1,100	661	741	581	814	756	990	996	739
14/15	1,292	1,245	771	1,096	1,069	979	715	1,038	789	1,191	1,026	1,039
3 Year Avg (11/12 - 13/14)	729	747	689	777	739	697	543	787	731	696	738	757

NUMBER OF NEW LOTS, BY MONTH

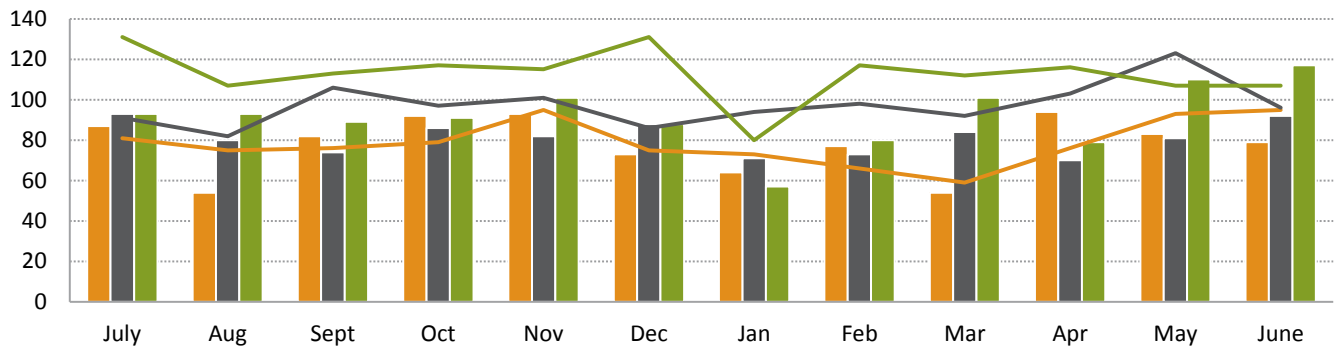
A total of 2,323 new lots were created during June 2015, a 36.94% decrease from the previous month (3,684) and a 41.39% increase from June 2014 (1,643).



	JULY	AUG	SEP	OCT	NOV	DEC	JAN	FEB	MAR	APR	MAY	JUNE
11/12	1,531	2,084	1,944	1,674	2,228	1,600	1,231	1,864	1,846	1,906	1,834	1,847
12/13	1,800	1,693	1,442	2,131	2,052	1,857	1,586	1,859	1,859	2,250	2,189	1,651
13/14	2,230	1,990	2,140	3,204	2,464	1,851	1,618	2,301	2,942	3,955	2,923	1,643
14/15	2,785	3,351	2,574	2,698	2,572	2,760	1,996	2,650	3,276	3,319	3,684	2,323
3 Year Avg (11/12 - 13/14)	1,854	1,923	1,842	2,336	2,248	1,769	1,478	2,008	2,216	2,704	2,315	1,714

STRATA PLANS (SP) and SURVEY STRATA PLANS (SSP) LODGED, BY MONTH

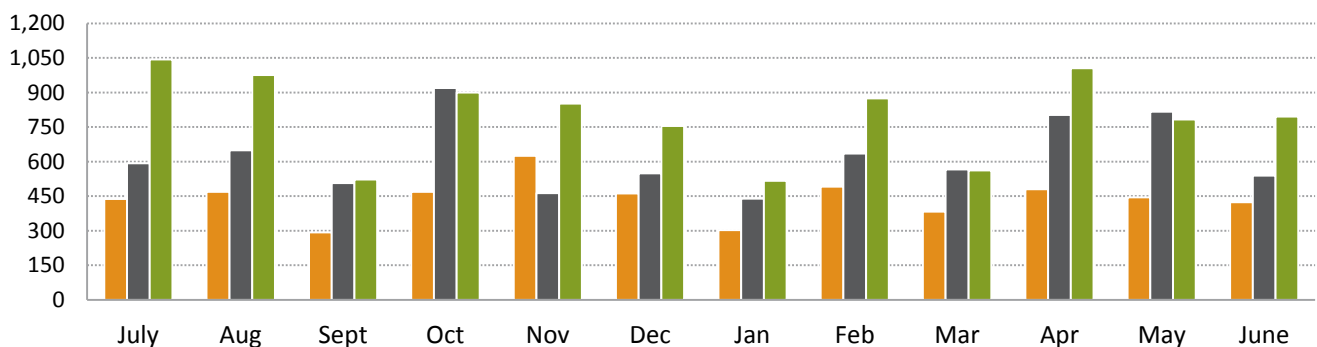
A total of 224 Strata Plans and Survey Strata Plans were lodged in June 2015, a 3.23% increase from the previous month (217) and a 19.15% increase from June 2014 (188).



	JULY	AUG	SEP	OCT	NOV	DEC	JAN	FEB	MAR	APR	MAY	JUNE
12/13 SP	87	54	82	92	93	73	64	77	54	94	83	79
12/13 SSP	81	75	76	79	95	75	73	66	59	76	93	95
13/14 SP	93	80	74	86	82	88	71	73	84	70	81	92
13/14 SSP	91	82	106	97	101	86	94	98	92	103	123	96
14/15 SP	93	93	89	91	101	88	57	80	101	79	110	117
14/15 SSP	131	107	113	117	115	131	80	117	112	116	107	107

STRATA PLANS (SP) and SURVEY STRATA PLANS (SSP) LOTS CREATED REQUIRING WAPC APPROVAL, BY MONTH

A total of 795 lots were created requiring WAPC approval in June 2015, a 1.53% increase from the previous month (783) and a 47.50% increase from June 2014 (539).

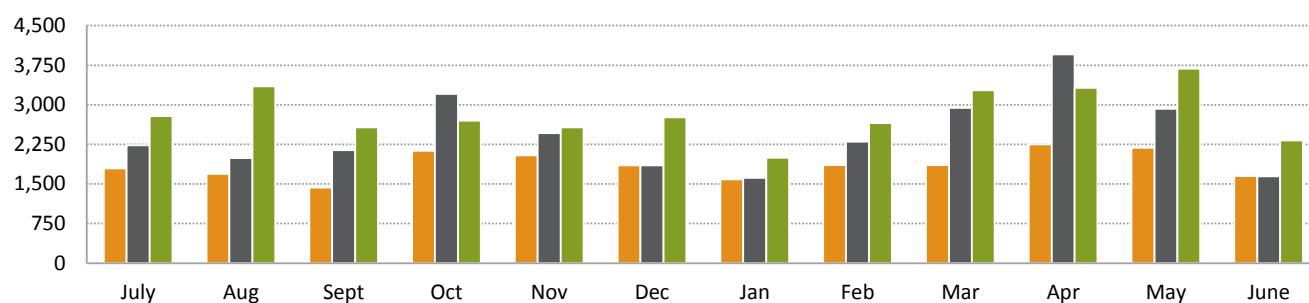


	JULY	AUG	SEP	OCT	NOV	DEC	JAN	FEB	MAR	APR	MAY	JUNE
12/13 WAPC	437	469	292	469	625	461	302	491	382	480	445	423
12/13 WAPC EX	205	109	187	202	217	137	163	173	125	203	163	187
13/14 WAPC	592	649	506	919	463	549	439	635	566	803	817	539
13/14 WAPC EX	220	179	175	181	198	192	142	179	190	187	179	200
14/15 WAPC	1,043	975	522	899	852	755	516	874	562	1,005	783	795
14/15 WAPC EX	249	270	249	197	217	224	199	164	227	186	243	244

* Ex = Exempt

STRATA LOTS (SL) CREATED AS A % OF ALL LOTS CREATED, BY MONTH

Strata lots represented 44.73% of All Lots Created in June 2015 (2,323).



	JULY	AUG	SEP	OCT	NOV	DEC	JAN	FEB	MAR	APR	MAY	JUNE
12/13 All Lots	1,796	1,690	1,433	2,131	2,045	1,854	1,586	1,859	1,859	2,250	2,189	1,650
12/13 % SL	35.75	34.20	33.43	32.84	41.17	32.25	29.32	35.72	27.27	30.36	27.78	36.95
13/14 All Lots	2,230	1,990	2,140	3,204	2,464	1,851	1,618	2,301	2,942	3,955	2,923	1,643
13/14 % SL	36.41	41.61	31.82	34.33	26.83	40.03	35.91	35.38	25.70	25.03	34.07	44.98
14/15 All Lots	2,785	3,351	2,574	2,698	2,572	2,760	1,996	2,650	3,276	3,319	3,684	2,323
14/15 % SL	46.39	37.15	29.95	40.62	41.56	35.47	35.82	39.17	24.08	35.88	27.85	44.73

Disclaimer

To the extent permitted by law, the Western Australian Land Information Authority trading as Landgate will in no way be liable to you or anyone else for any loss, damage or costs however caused (including through negligence) which may be directly or indirectly suffered arising from the use of or reliance on any information or data (including incomplete, out of date, wrong, inaccurate or misleading information or data) whether expressed or implied in the Report.

The information contained in this Report is provided by Landgate in good faith on an “as is” basis. The information is believed to be accurate and current at the date the Report was created. However changes in circumstances may affect the accuracy and completeness of the information. Landgate makes no representation or warranty as to the reliability, accuracy or completeness, merchantability or fitness for purpose of the information contained in this Report. You should not act on the basis of anything contained in this Report without first obtaining specific professional advice. It is not intended to provide the basis for any evaluation, decision or forecasting. You must make your own assessment of it and rely on it wholly at your own risk. Where there is any concern about accuracy and currency of the information in the Report, reference should be made to Landgate for verification.

To the extent permitted by law, all representations, warranties and other terms are excluded and where they cannot be excluded, any liability suffered arising out of use of the Report is limited to resupply.

Copyright

You may download and print the Report only for your personal and non-commercial use or use within your organisation for internal purposes, unless you have prior written approval.

Other than for the purposes of and subject to the conditions prescribed under the Copyright Act, you may not, in any form or by any means without Landgate’s prior written permission

- adapt, reproduce, store, distribute, transmit, print, display, perform, publish or create derivative works from any part of the Report; or
- commercialise any information, products or services obtained from any part of the Report.

Requests to use copyright material should be addressed to Landgate, PO Box 2222, Midland WA 6036. Telephone (08) 92737373 or email: customerservice@landgate.wa.gov.au.

Any authorised reproduction however altered, reformatted or redisplayed must acknowledge the source of the information and that Landgate is the owner of copyright.